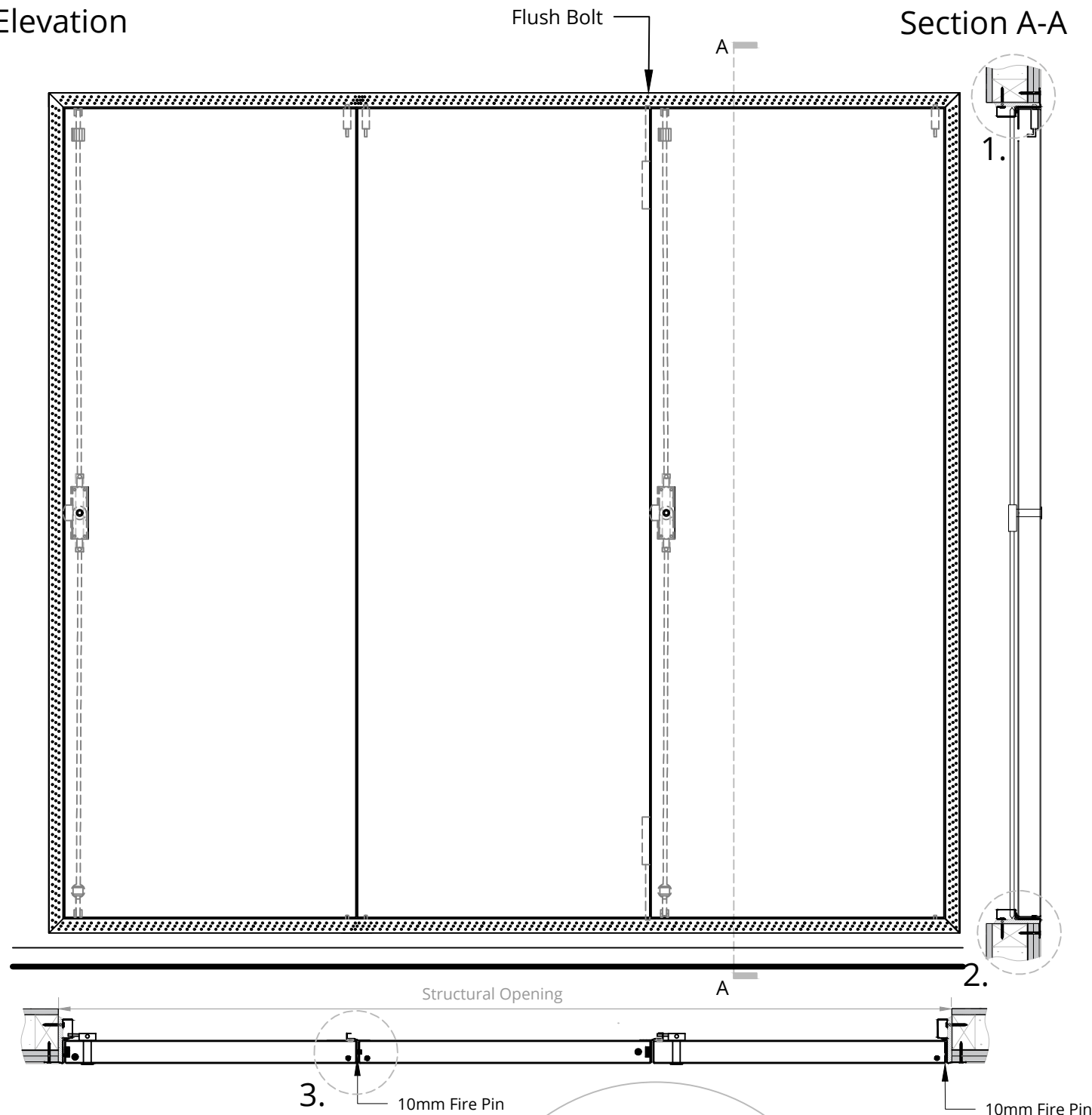


Elevation

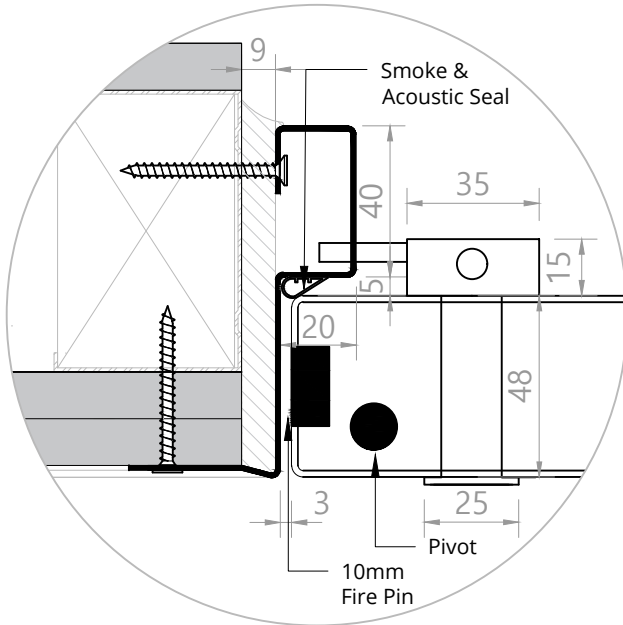
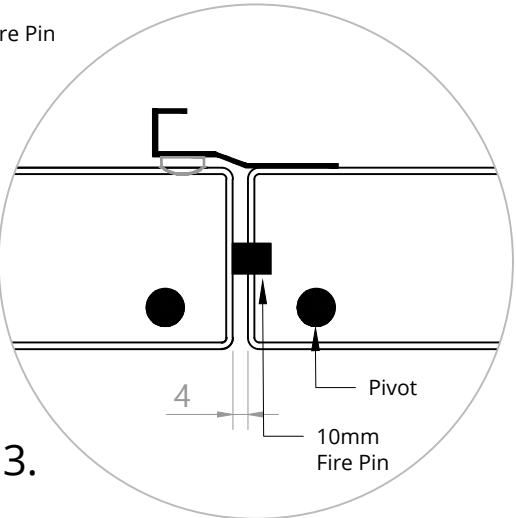
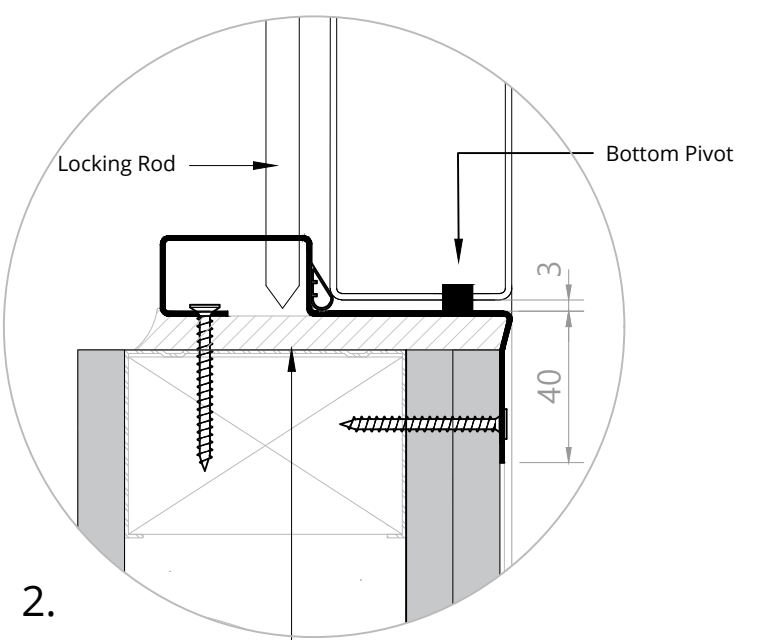
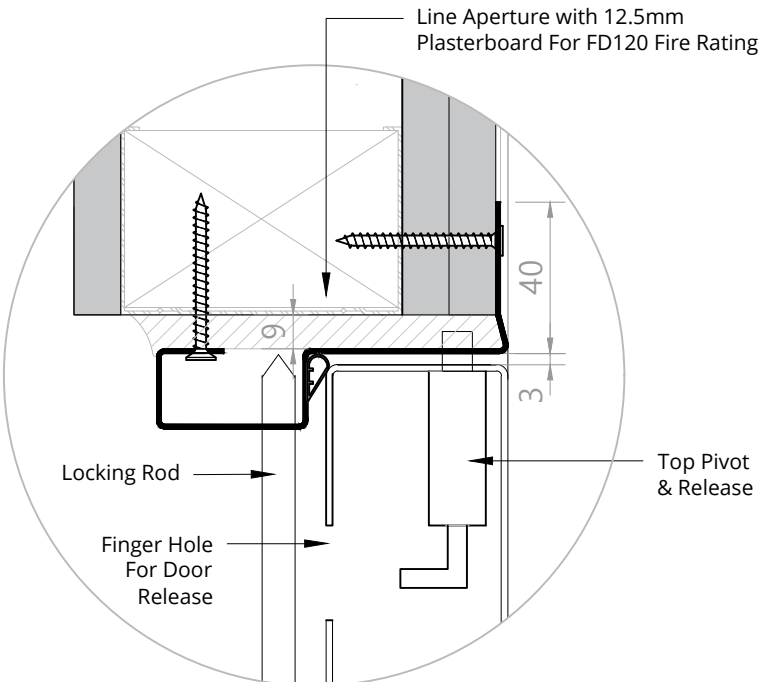
Section A-A



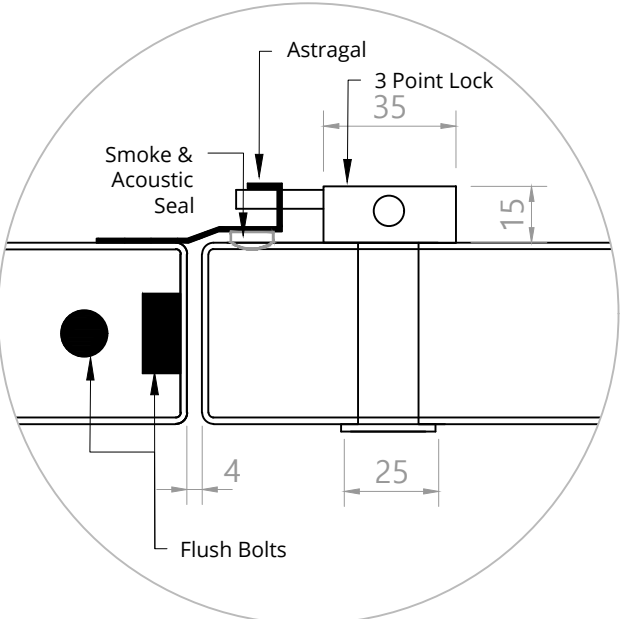
1.

2.

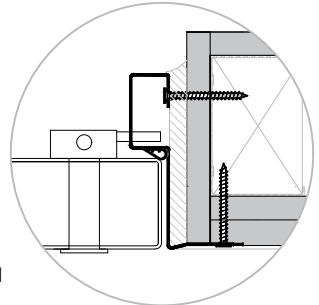
3.



Frame/ Pivot



Lock



PLEASE NOTE: For FD90/FD120 Fire Rating The Aperture Must Be Lined With A Minimum Of 12.5mm Plasterboard

**aspex**

W: [www.aspex-uk.co.uk](http://www.aspex-uk.co.uk)  
E: [sales@aspex-uk.co.uk](mailto:sales@aspex-uk.co.uk)  
England & Wales T: 0116 278 3506  
Scotland & Ireland T: 0123 672 0061

drawing title  
Triple FD120 Steel Door  
Standard Lock  
dwg number  
NRS-43000-12-STE

product  
**novista**  
riser doorsets  
rev  
drawn by  
IS  
date  
01/07/20  
scale  
1:12 & 1:2 @ A3

comment

date

notes  
1. Do not scale drawings  
2. Site verify all dimensions prior to construction  
3. Report all discrepancies to Aspex immediately  
4. Read in conjunction with all relevant documents and drawings