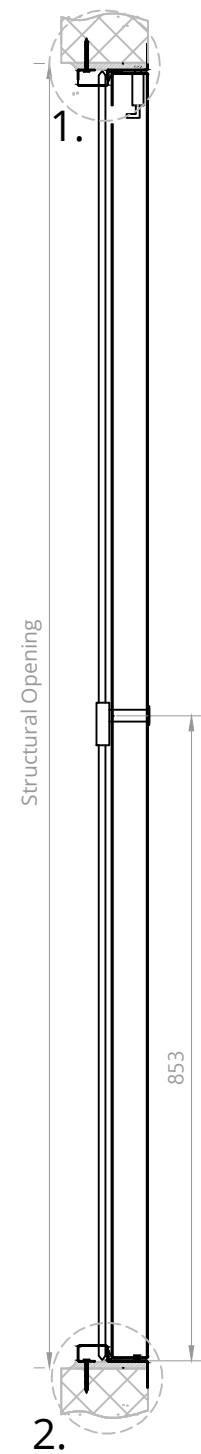
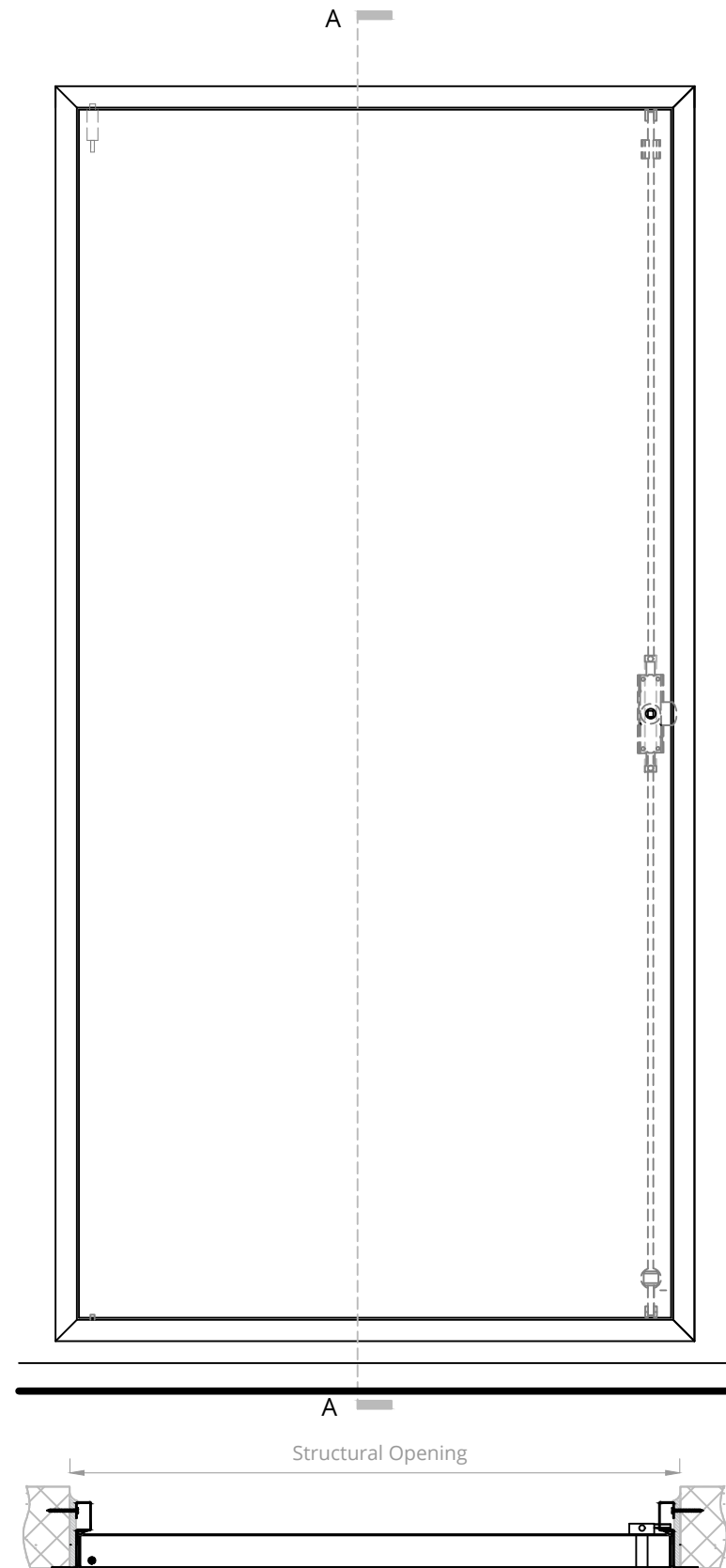
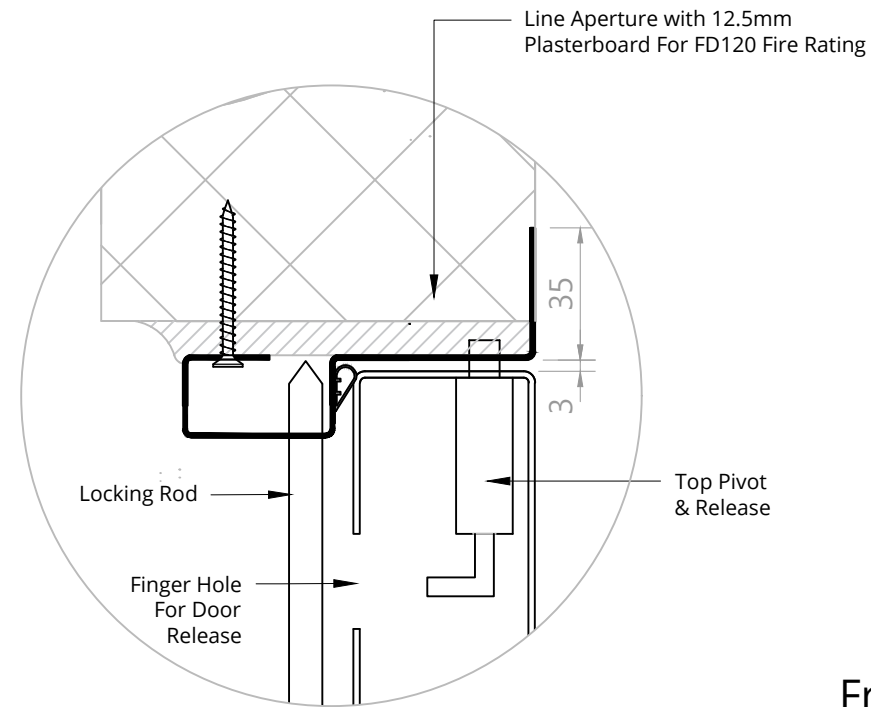


Elevation

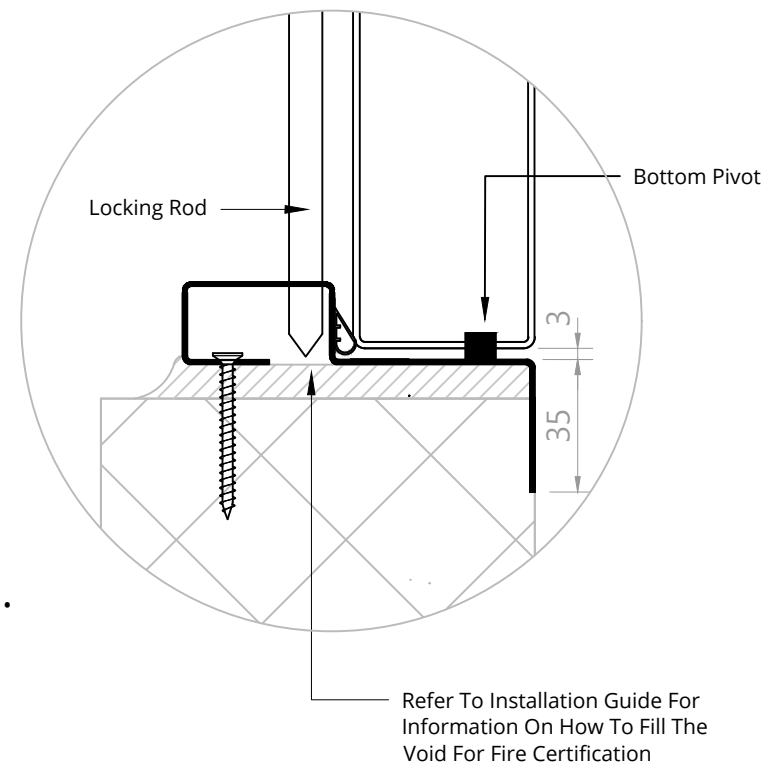
Section A-A



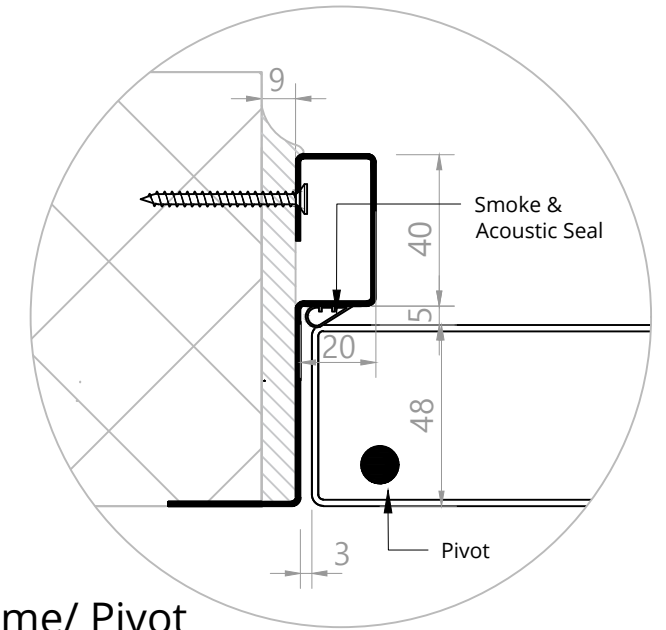
1.



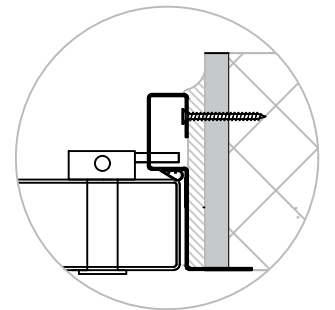
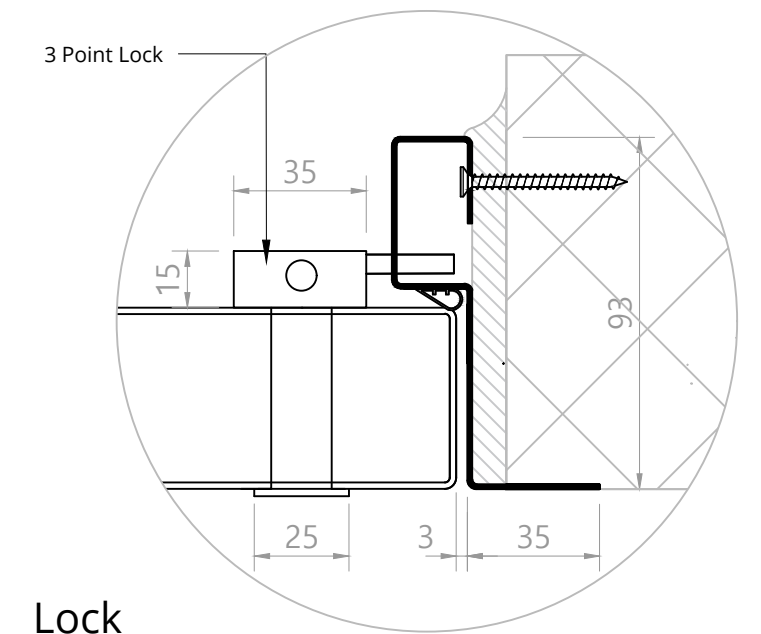
2.



Frame/ Pivot



Lock



PLEASE NOTE: For FD90/FD120 Fire Rating The Aperture Must Be Lined With A Minimum Of 12.5mm Plasterboard

aspex

W: www.aspex-uk.co.uk
E: sales@aspex-uk.co.uk

England & Wales T: 0116 278 3506
Scotland & Ireland T: 0123 672 0061

drawing title
Single FD120 Steel Door
Standard Lock - Picture Frame

dwg number
NRS-41000-12-STE-P

product

drawn by
IS

novista
riser doorsets

date
01/07/20

scale
1:10 & 1:2 @ A3

rev

comment

date

notes

1. Do not scale drawings
2. Site verify all dimensions prior to construction
3. Report all discrepancies to Aspex immediately
4. Read in conjunction with all relevant documents and drawings