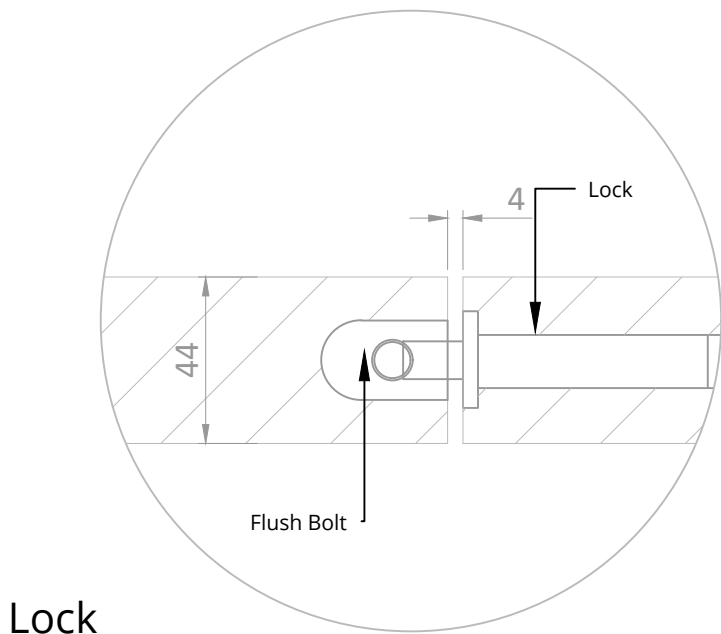
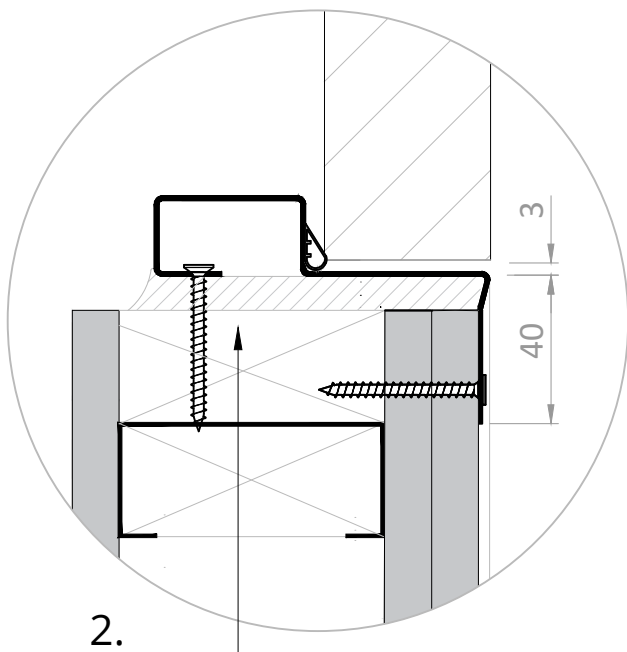
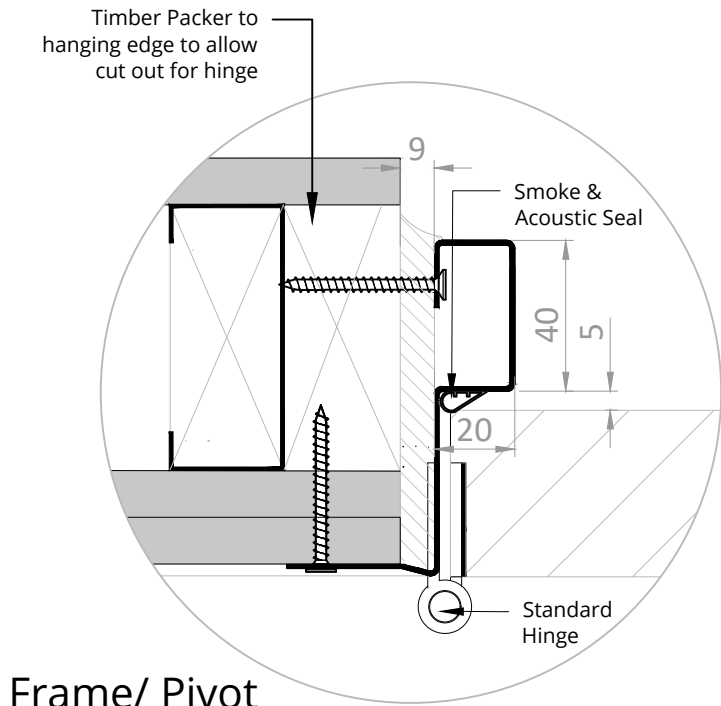
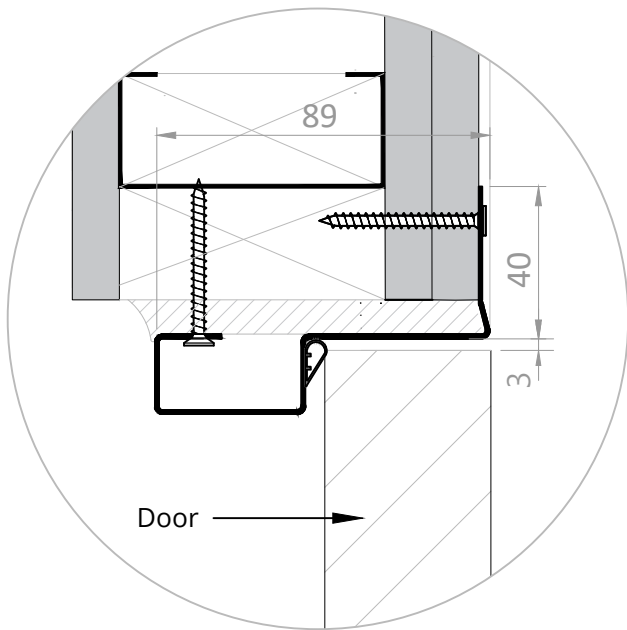
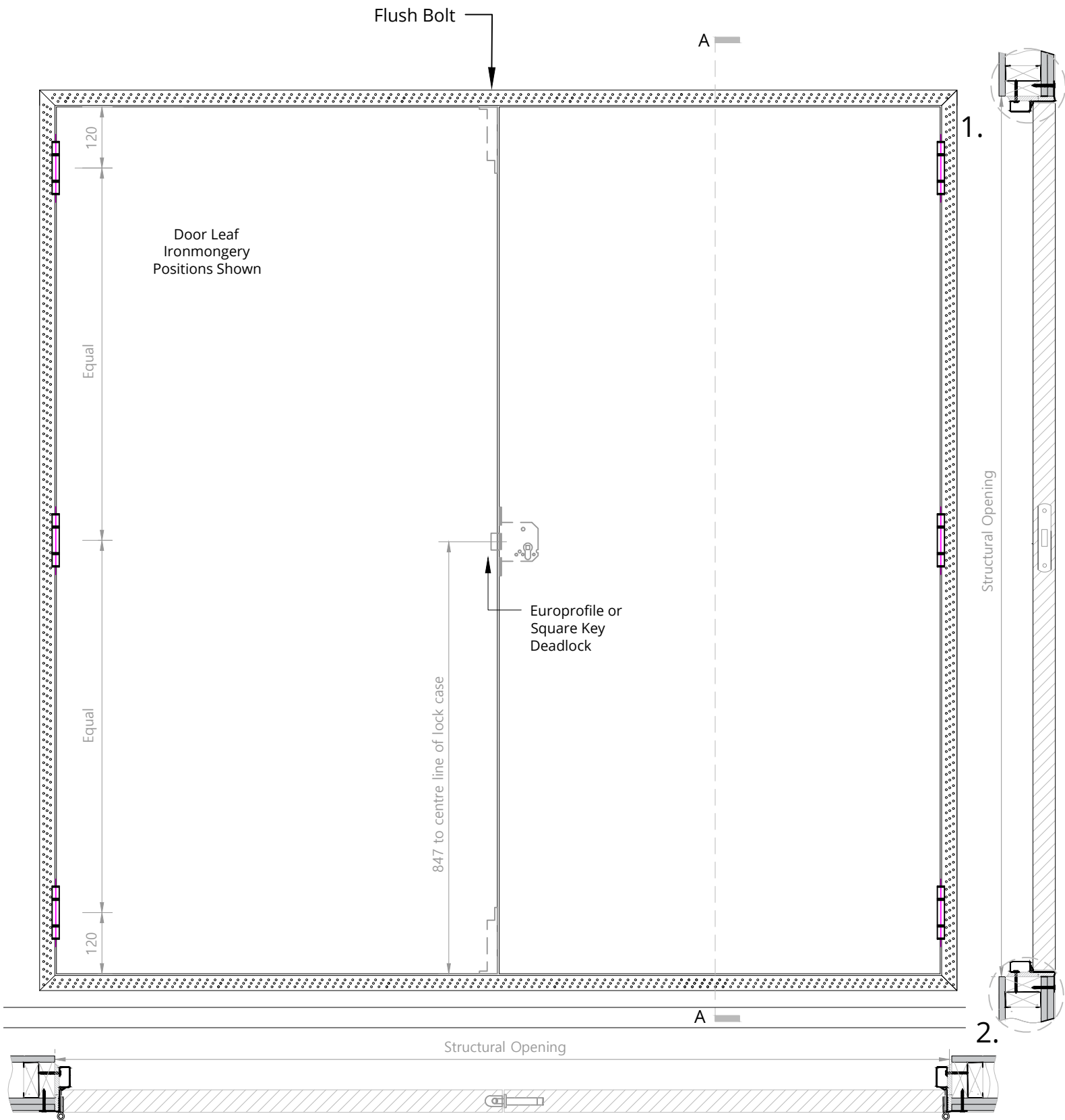


Elevation

Section A-A



Refer To Installation Guide For Information On How To Fill The Void For Fire Certification

aspex

W: www.aspex-uk.co.uk
E: sales@aspex-uk.co.uk

England & Wales T: 0116 278 3506
Scotland & Ireland T: 0123 672 0061

drawing title
Double NFR Timber Door
Standard Hinge

dwg number
NRT-42000-00-STE

rev

product

drawn by
IS

novista
riser doorsets

date

01/07/20

scale

1:10 & 1:2 @ A3

rev

comment

date

notes

1. Do not scale drawings
2. Site verify all dimensions prior to construction
3. Report all discrepancies to Aspex immediately
4. Read in conjunction with all relevant documents and drawings