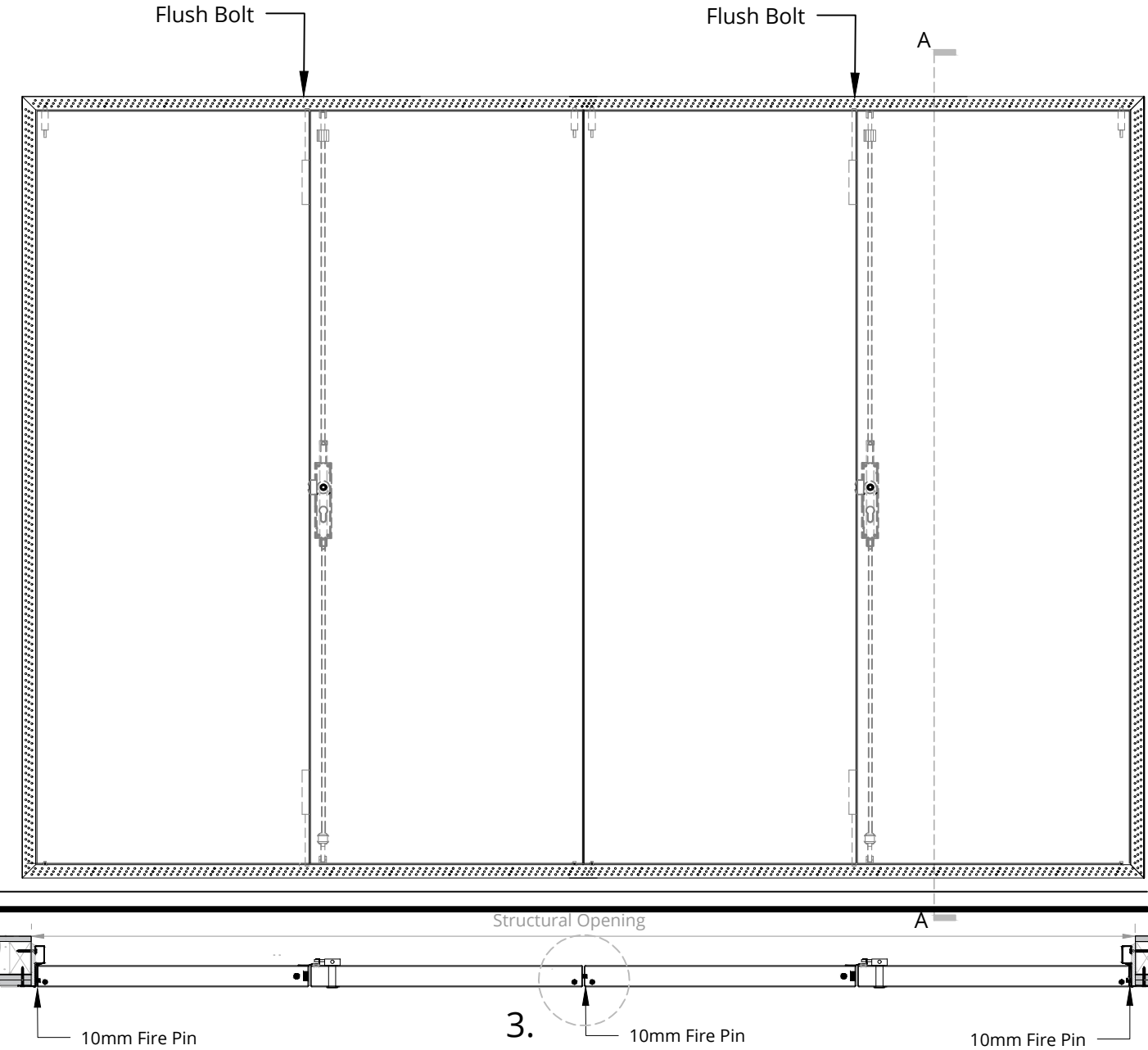
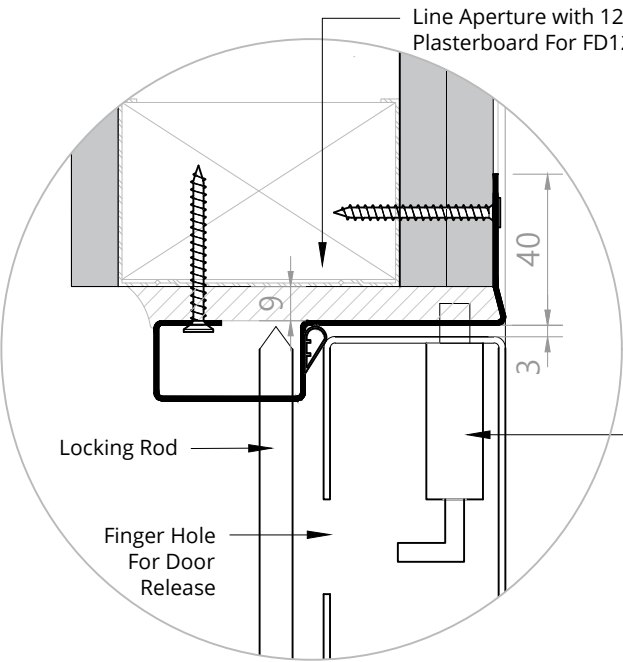
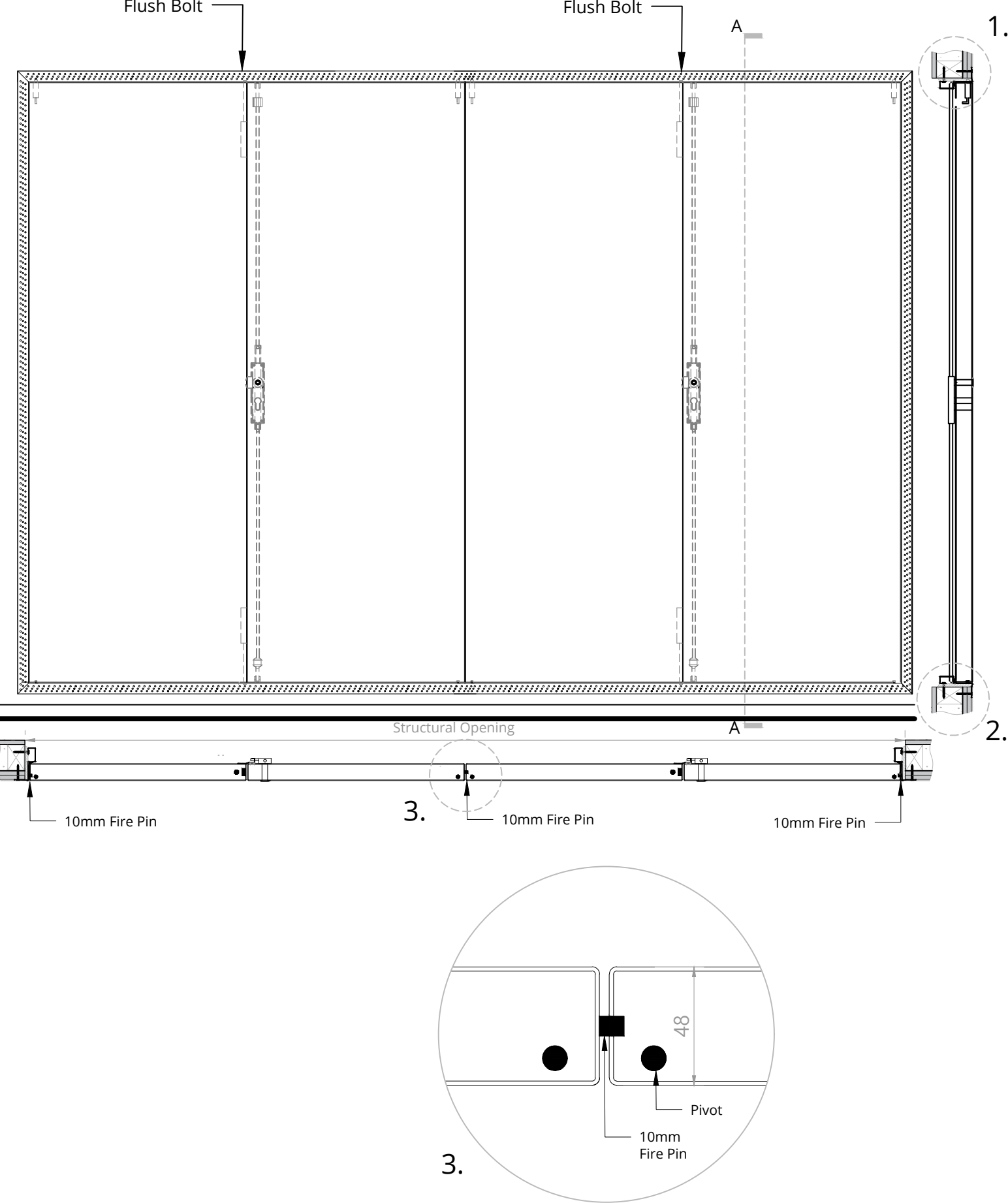


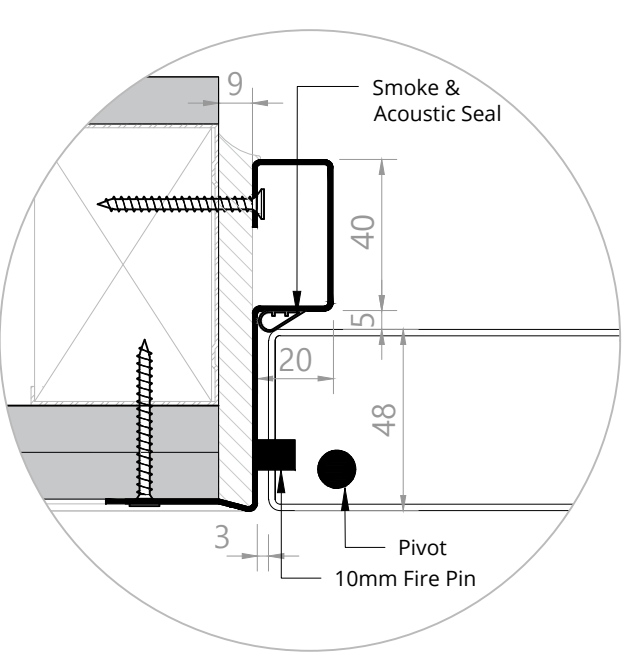
Elevation



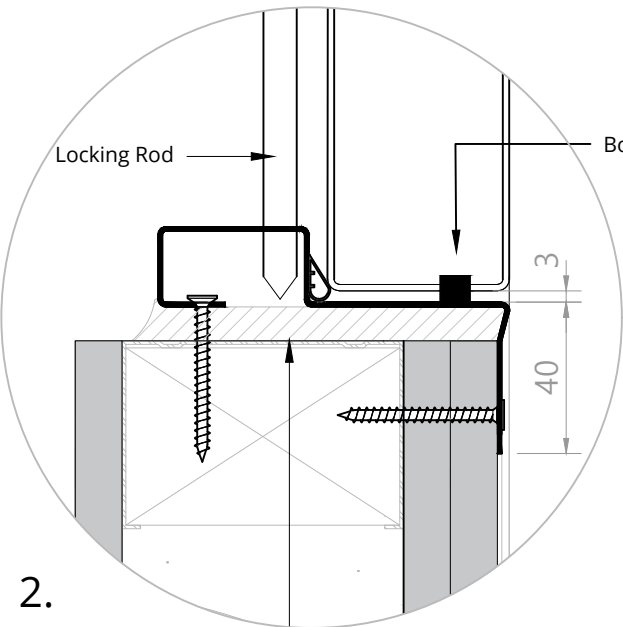
Section A-A



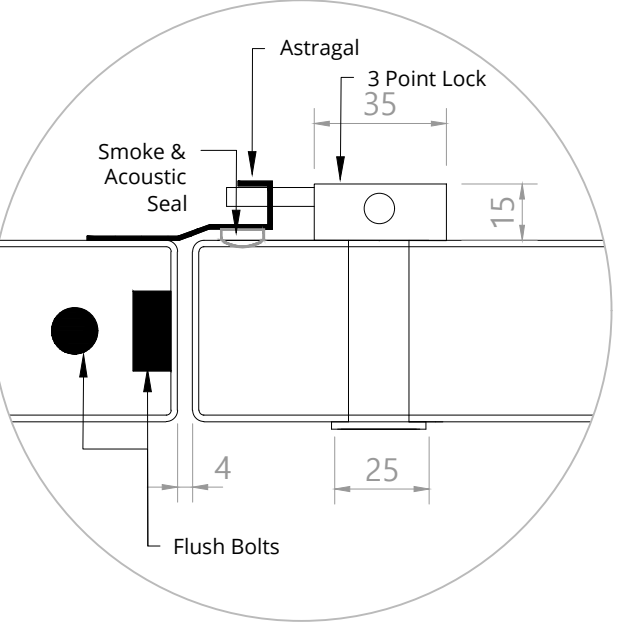
1.



Frame/ Pivot

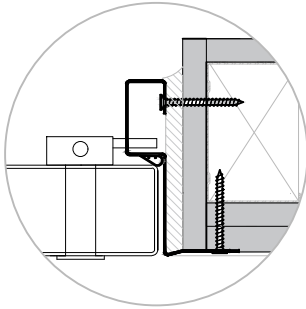


2.



Lock

PLEASE NOTE: For FD90/FD120 Fire Rating The Aperture Must Be Lined With A Minimum Of 12.5mm Plasterboard



aspex

W: www.aspex-uk.co.uk
E: sales@aspex-uk.co.uk

England & Wales T: 0116 278 3506
Scotland & Ireland T: 0123 672 0061

drawing title
Quadruple FD120 Steel Door
Euro Profile Lock

dwg number
NRS-44100-12-STE

product

novista
riser doorsets

drawn by
IS

date
01/07/20

scale
1:14 & 1:2 @ A3

rev

comment

date

notes

1. Do not scale drawings
2. Site verify all dimensions prior to construction
3. Report all discrepancies to Aspex immediately
4. Read in conjunction with all relevant documents and drawings